

# Get Ready for Kindergarten!!!

Lewis Elementary School

February 22, 2021

Principal: Debra Fitzpatrick

Assistant Principal: Alesha Looper



Welcome to Hillsborough County Public Schools!  
Superintendent –Addison Davis  
[sdhc.k12.fl.us](http://sdhc.k12.fl.us)

Lewis Elementary School  
6700 E. Whiteway Dr.  
Temple Terrace, Florida 33617

813-987-6947  
[www.hillsboroughschools.org/lewis](http://www.hillsboroughschools.org/lewis)



# Lewis Elementary School

Our Vision: Learn Here, Succeed Anywhere

Our Mission: Roland H. Lewis Elementary School will provide every student with a safe

Learning

Environment

Where all

Individuals Are

Successful



# Our Kindergarten Team

## Teachers:

Lori Cole, Rita Landall, Rebecca Loomis,  
Kelli Rivera, Briten Latta, and Judy Weir

## Paraprofessional Assistants:

Lynne Formanski, Jasmine Rogers



# What is Expected from Your Child?

- Behavior that promotes learning
- Participation in the classroom family
- Active listening throughout the day
- Responsibility (getting work done)
- Independence
- Effort (Growth Mindset)
- Self-sufficiency in the restroom



# What is Expected from You!



- Encourage positive behavior and Independence!
- Review daily Planner Folder and classwork together
- Make sure the teacher knows how your child will be going home (bus, car, walking, Daycare van) and notify the office and teacher of any changes in writing.
- Make sure the office has your current phone numbers, address, emergency contact, and email address
- Have your child arrive at school on time
  - School opens at 7:10, students are tardy at 7:40 AM
  - Monday, Early Release Dismissal 12:55
  - Tuesday – Friday, Dismissal 1:55
- Notify us immediately if you have any concerns



# Uniforms

Uniforms are Mandatory

- Tops are Red, White, or Royal Blue
- Navy and Khaki Dresses, Pants, Skirts or Skorts
- Appropriate closed-toe shoes for outside play



# Sample Daily Schedule- (no nap time)

Time	Subject
7:10 – 7:40	Arrival; Breakfast; Bell Work; Morning Show
7:40– 8:10	Foundational Skill Work, SIPPS
8:10 – 10:00	Reading & Writing ELA (Phonics, Guided Reading Skills Groups, and Whole Group Lessons)
10:00 – 10:30	Lunch
10:30 – 12:00	Math
12:00 – 12:30	Teacher Directed PE
12:30- 1:15	Science/ Social Studies
1:15 – 1:45	Social Centers (Independent conferences)





# Standards/Benchmarks

- Hillsborough County implements the Florida State Standards K-12.
  - Parents are encouraged to take a deeper look at the standards by visiting [www.fldoe.org](http://www.fldoe.org) and searching for “Kindergarten Florida Standards.”



# Reading

- Read Alouds
- Shared Reading
  - Big books
  - Interactive read alouds
- Guided/Skilled
  - Small groups
- Independent Practice
- SIPPS



# Writing

- Modeled
- Shared
- Guided
- Independent





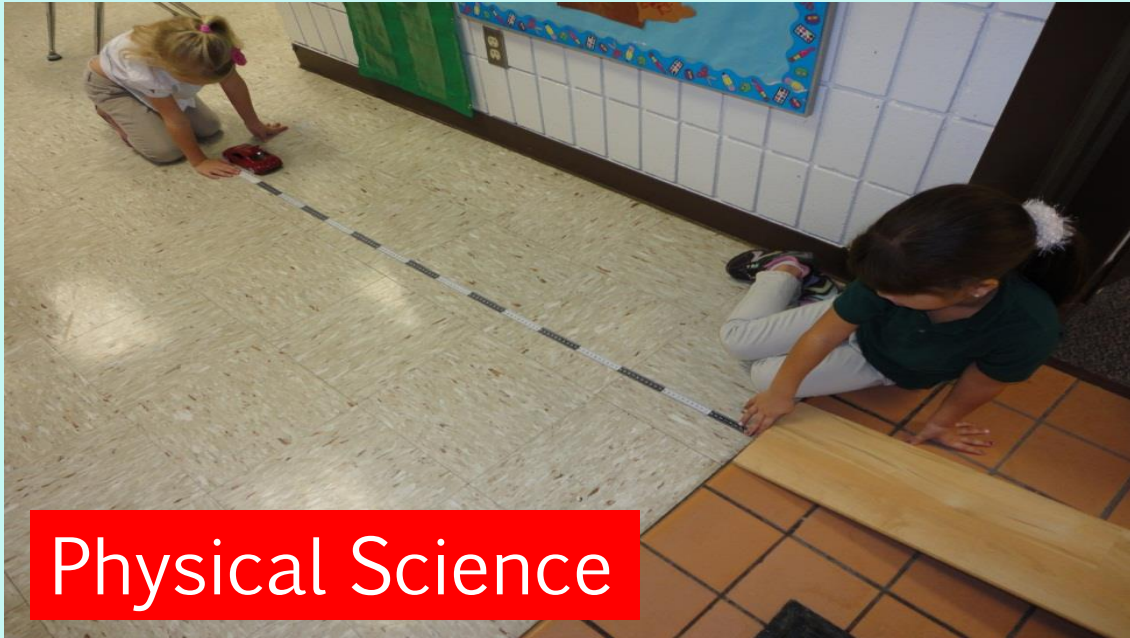
# Math

Hands-on  
activities to  
deepen  
understanding



# Science

- Observing using the five senses
- Hands-on activities for deeper understanding



Physical Science



Life Science



Earth Science

# Social Studies

- Calendars, Weather, Holidays, and American Heroes
- Hispanic Heritage Month
- Black History Month
- Jobs and Money, Wants and Needs, Families
- Rules and Laws, Good Citizens
- Maps and Globes, Symbols of America



# Registration Information

Data Processor: Kimmie Chevalier

You **MUST** have all of the following for your registration to be complete:

- Child must be 5 on or before September 1<sup>st</sup>, 2021
- Original Birth Certificate
- Social Security Card
- Current Physical (within 1 year of first day of school) with Shot Record
- Two proofs of address



# Documents needed for enrollment

- ▶ **What forms do I need to complete?**

- ▶ **Student Enrollment Record Form** - SER (provided at the school site)
- ▶ **Student Residency Form** - Supporting documentation is required



# Documents needed for enrollment (Continued)

What supporting documents do I need to register for kindergarten?

- Birth certificate
- Social security card, if available
- Florida Physical HRS Form -- [Florida Physical HRS form](#) supplied by a doctor dated within 12 months prior to entry in Florida Schools (first day of school)
- Florida Immunization Record on [HRS hard card](#) (form #680) supplied by a doctor
- **Two forms of verification of address** that prove where you live but are NOT your driver's license or state-issued ID card (some examples are electric bill, lease, or a contract to purchase a home)
- If a child lives with someone who is not a parent, you may also need to complete a student resident form, which is available at the school

# Important Information

- ▶ **School Lunch Program**
  - ▶ Online Registration: <https://www.sdhc.k12.fl.us/doc/list/student-nutrition-services/free-reduced-lunch-application/53-648/>
- ▶ **HOST Afterschool Care / YMCA**
  - ▶ Online Registration: <https://www.sdhc.k12.fl.us/doc/1418>
- ▶ **Bus Information**
- ▶ **Arrival and Dismissal Procedures**
- ▶ **Uniforms**
- ▶ **Health Conditions**
- ▶ **How to turn in paperwork and immunization information**



# Younger siblings and neighbors

## ▶ Head Start

- ▶ Head Start is a federally funded, comprehensive, child development program that encompasses all aspects of a child's development and learning. The program serves children ages 3 to 4 years old. Eligibility is based on income.

- ▶ <https://www.sdhc.k12.fl.us/doc/2601/early-childhood-programs-and-kindergarten/head-start/hsapply/>

## ▶ Florida's Voluntary Prekindergarten Program (VPK)

- ▶ All of Florida's four-year-olds have access to free, quality prekindergarten programs.

- ▶ 5 years old on or before September 1

- ▶ <https://www.sdhc.k12.fl.us/doc/list/early-childhood-programs-and-kindergarten/voluntary-prekindergarten/225-1241/>

# Magli Soto– School Nurse RN

## Cynthia Aplin- LPN

- Entry Vaccinations and Physicals
- Medications
- Nutrition
- Sleep Habits
- Hearing and Vision Screening



# Courtney Holder – ESE Specialist Stephanie Banea & Randie LeRoy-Cleary – Speech/Language

- Childfind (before child is registered)
  - Screen & Evaluate (3-5 years old)
    - Difficulty understanding child's speech
    - Child has difficulty engaging in conversational speech
    - Child is currently receiving Speech and/or Language Services (private)
- Speech Screenings



# Victoria Johnson -Cafeteria Manager

- Student numbers are used to acquire meals.
- Universal Breakfast
  - Free for all students
  - **Served between 7:10 -7:40 a.m.**
- Free and Reduced Lunch
  - Forms available upon registration/online registration available
- Current lunch price is FREE (2021-2022 prices are subject to change)
- Payment options: Online Payment is available & recommended
- Please ask for Dietary Restriction Form if needed.



# Lisandra Molina

## English Language Learner Program

- SER form – Home Language Survey section
- Screening
- Instructional support for children who speak other languages



**Amanda Leonard** Guidance Counselor

**Taylor Janssen** – Social Worker

- School-wide discipline plan
- Guidance services
- Social work services





# Rebecca Latta – PTA President

Find Parent-Teacher Association information

- [lewispta.com](http://lewispta.com)
- Facebook
- Twitter



# mySPOT

mySPOT is an Internet “Parent Hub” where you will be able to gain access to district and student resources

- Canvas
- MyPaymentsPlus
- School District Calendar
- Links to Virtual Libraries
- Choice and Magnet Information
- Parent University
- And more!

Don't be left out!!!!



## Voluntary Pre-Kindergarten Classes

- FREE Summer program to ensure kindergarten readiness
- Summer program – dates and times to be determined
- Registration requirements: proof of birth, proof of residence and a shot record
- Registration dates TBD
- Child must be eligible to start kindergarten August, 2021 (age 5 by September 1, 2021)
- Child may not have attended a school-year VPK Program, nor have been eligible for kindergarten for the 2020-2021 school-year
- Highly recommended

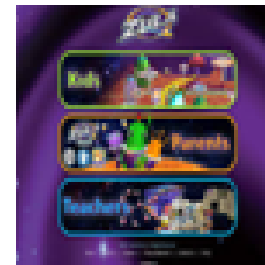
**VPK Hotline: 813-272-4840**



HOST  
813-744-8941  
Ext. 3



# HOST PROGRAM



**HOST Mission**-Provide out-of-school time programs that empower students to grow and develop in a safe, caring and educationally enriched environment.

**Hours**- Before School- 6:30am – 7:30am

After School - Dismissal to 6:00pm

Summer- 7:00am – 6:00pm



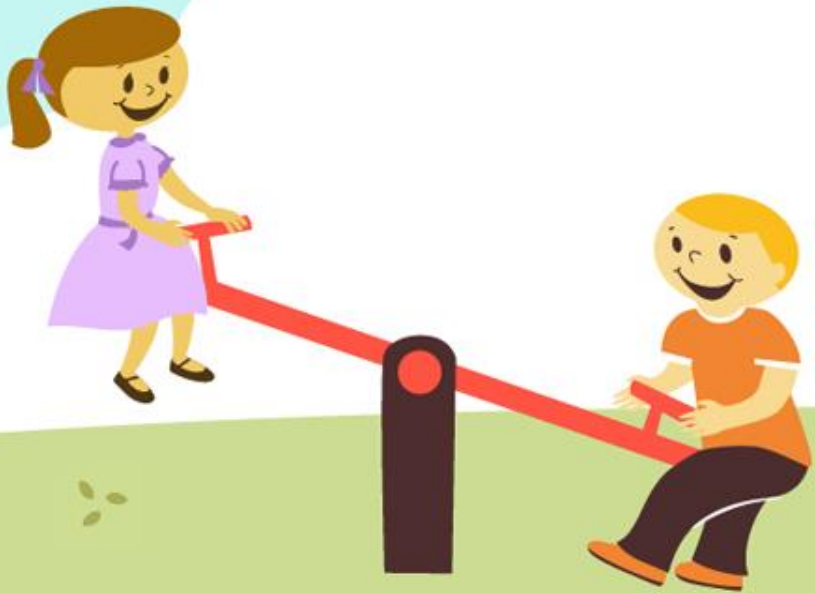
ENRICHMENT  
CLUBS

**Fee Based Program**

CHARACTER  
EDUCATION



Thanks for Visiting  
Lewis Elementary  
School!



# Our School



# Our Classrooms



# Our Teachers





# Our Learning

